

Fax Routing to Cloud



It is the reader's responsibility when discussing the information contained this document to maintain a level of confidentiality that is in the best interest of Ricoh USA INC and its member companies.

NO PART OF THIS DOCUMENT MAY BE REPRODUCED IN ANY FASHION AND/OR DISTRIBUTED WITHOUT THE PRIOR PERMISSION OF RICOH USA INC

All product names, partner's brands and their products, domain names or product illustrations, including desktop images used in this document are trademarks, registered trademarks or the property of their respective holders and should be noted as such.

Any trademark or registered trademark found in this support manual is used in an informational or editorial fashion only and for the benefit of such companies. No such use, or the use of any trade name, or web site is intended to convey endorsement or other affiliation with Ricoh products.

Copyright © 2022-2026 Ricoh USA INC

Table of Contents

Table of Contents	4
1 Preface	5
2 Introduction.....	6
3 Cloud Service Coordination.....	8
4 Fax Routing to Cloud Application Installation & Configuration.....	9
Fax Routing to Cloud Installation	9
Fax Routing to Cloud Configuration	13
5 Configuring default Values.....	19
Fax Routing	20
6 Use Case.....	22
7 Fax Routing to Cloud Application Uninstallation	24
8 Limitations.....	27
Limitations	27

1 Preface

This guide provides the details on how to use the Fax Routing to Cloud application and workflow.

About This Guide

This guide is divided into following primary sections:

1. Introduction

This section lays the foundation for understanding the workflow specification

2. Cloud Service Coordination

This section describes how to do service Coordination

3. Fax Routing to Cloud Installation and Configuration

This section contains step-by-step instructions on how to install and configure embedded application MFP from Application Site

4. Configuring Default Values

This section contains step-by-step instructions on how to Configure settings in Fax Routing Workflow in RSI Workplace by Administrator.

6. Use Case

This section describes a use case of this application

7. Fax Routing to Cloud Uninstallation

This section describes how to uninstall Fax Routing to Cloud application

8. Limitations

Product Limitations

Note: The operation panel screen shot images and User Site images provided in this document are for illustrative purposes only. These images may not reflect the exact image you experience on your multi-functional printer (MFP device).

2 Introduction

What is Fax Routing to Cloud?

Fax routing to Cloud routes incoming fax to Cloud Service folder. There are two components in the Fax Routing to Cloud application:

1. Embedded application which needs to be installed on RICOH Multi-Function Device
2. Subscription to RSI Package which contains Fax Routing workflow.

Also, MFP needs to have a Fax card and connected to Fax line.

Fax Routing to Cloud supports following Cloud Services:

1. Box
2. Dropbox
3. Google Drive
4. OneDrive for Business
5. SharePoint

Note:

1. Only one cloud destination can be configured at a time, depending on the Fax Routing Workflow configuration.
2. There is no workflow related user interface is available on the MFP panel. Workflow configuration is done in RSI workplace by administrator.
3. Fax Routing Embedded app provides user interface to configure proper workflow.

Fax Routing Workflow Specification

Even though there is no user interface on the operation panel for the workflow. Following items are available for configuration in Workplace.

External Service	Dropbox Box Google Drive OneDrive for Business SharePoint
Service Account	Select Admin User
Folder	Default Folder
OCR	OFF, PDF, PDF/A, WORD, EXCEL
OCR Language	English, French
File Name	Optional (If entered, this value is used as filename)
File Name Formula	<p>If filename is left blank, filename is created using the formula programmed in User Site (Refer to section 'Configuring default Values')</p> <p>Default Formula:</p> <p>YEAR(NOW()) & "-" & MONTH(NOW()) & "-" & DAY(NOW()) & "-" & HOUR(NOW()) & MINUTE(NOW()) & SECOND(NOW())</p> <p>Example: 2018-12-21-091654.pdf</p>

3 Cloud Service Coordination

What is Cloud Service Coordination?

Before using Fax Routing workflow, Admin user need to establish External Service Coordination with preferred choice of Cloud Service.

Refer to Smart Integration Cloud Service Coordination User Guide for step-by-step instructions.

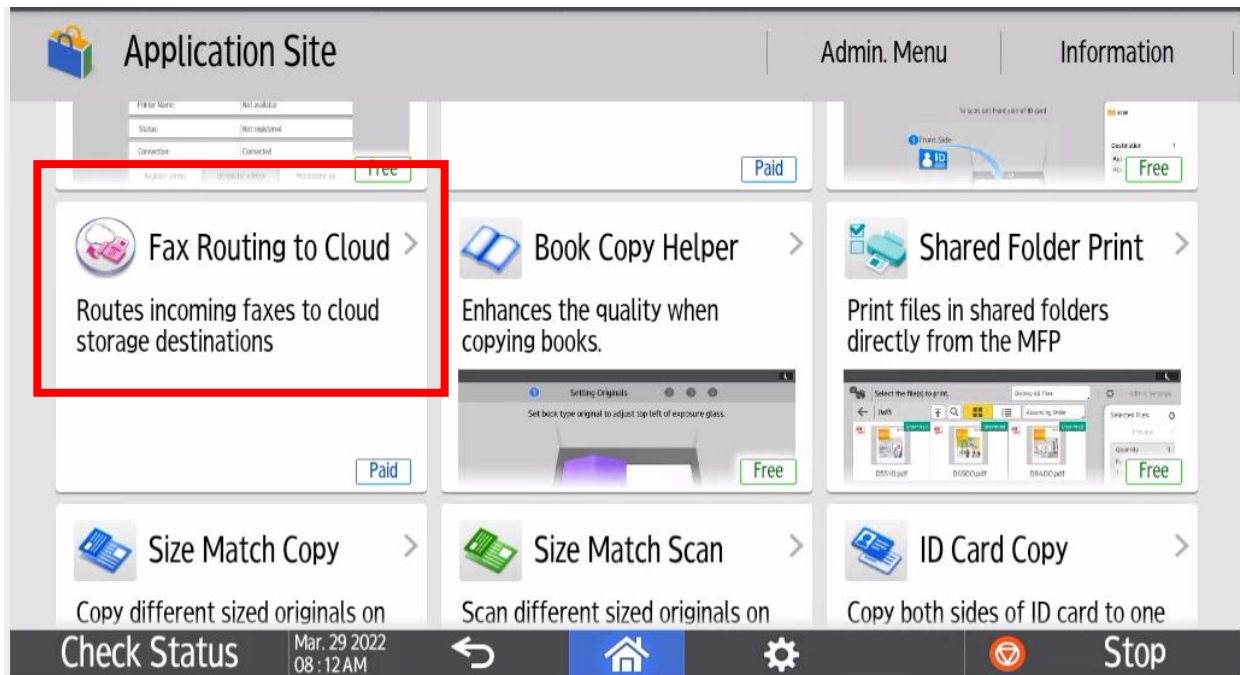
4 Fax Routing to Cloud Application Installation & Configuration

'Fax Routing to Cloud' is embedded application, needs to be installed on MFP, which works in conjunction with Fax Routing Workflow.

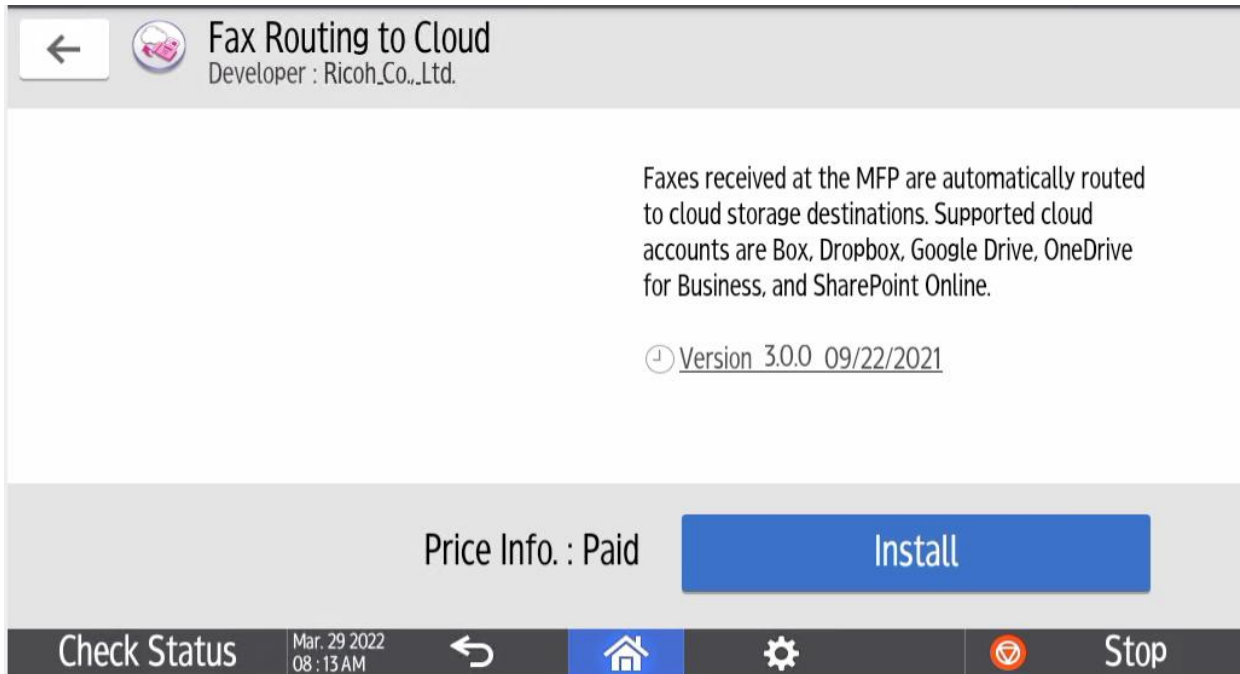
Fax Routing to Cloud Installation

Step 1: Open Application Site on MFP

Application Site: Touch on 'Fax Routing to Cloud'

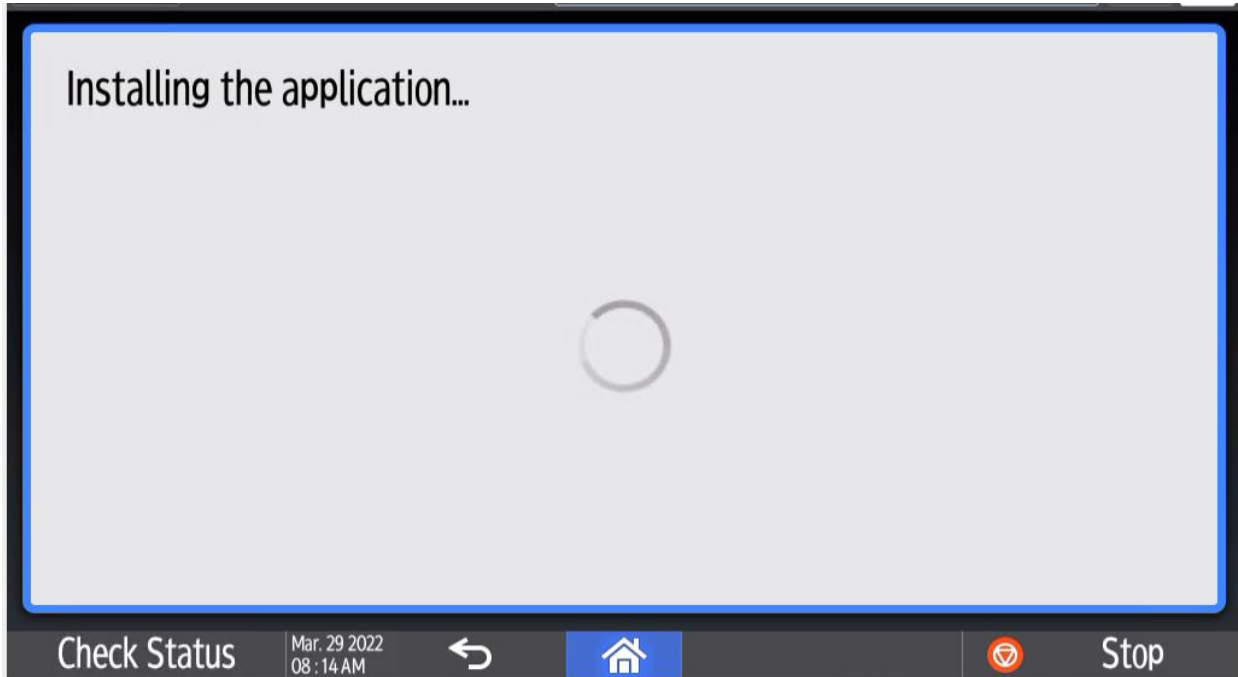


Step 2: Touch on 'Install' button

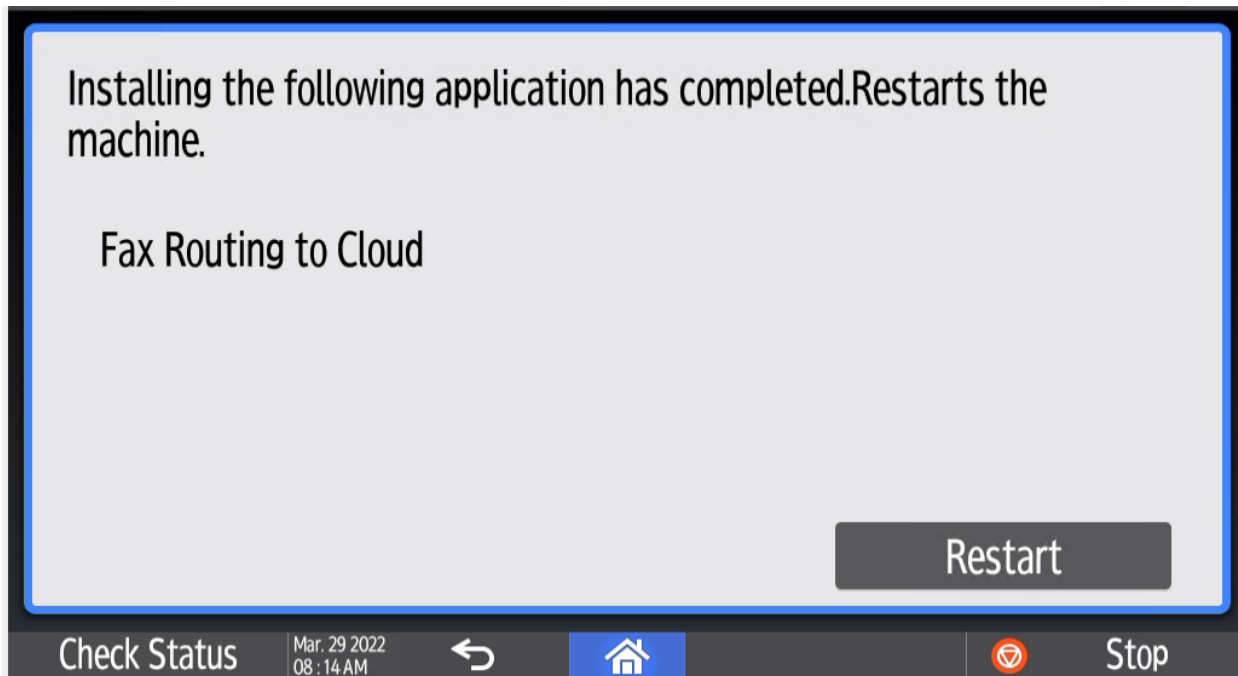


Step 3: Touch on 'Install' on this dialog





Step 4: Touch on 'Restart' to restart MFP.



Restarts the machine.



Check Status

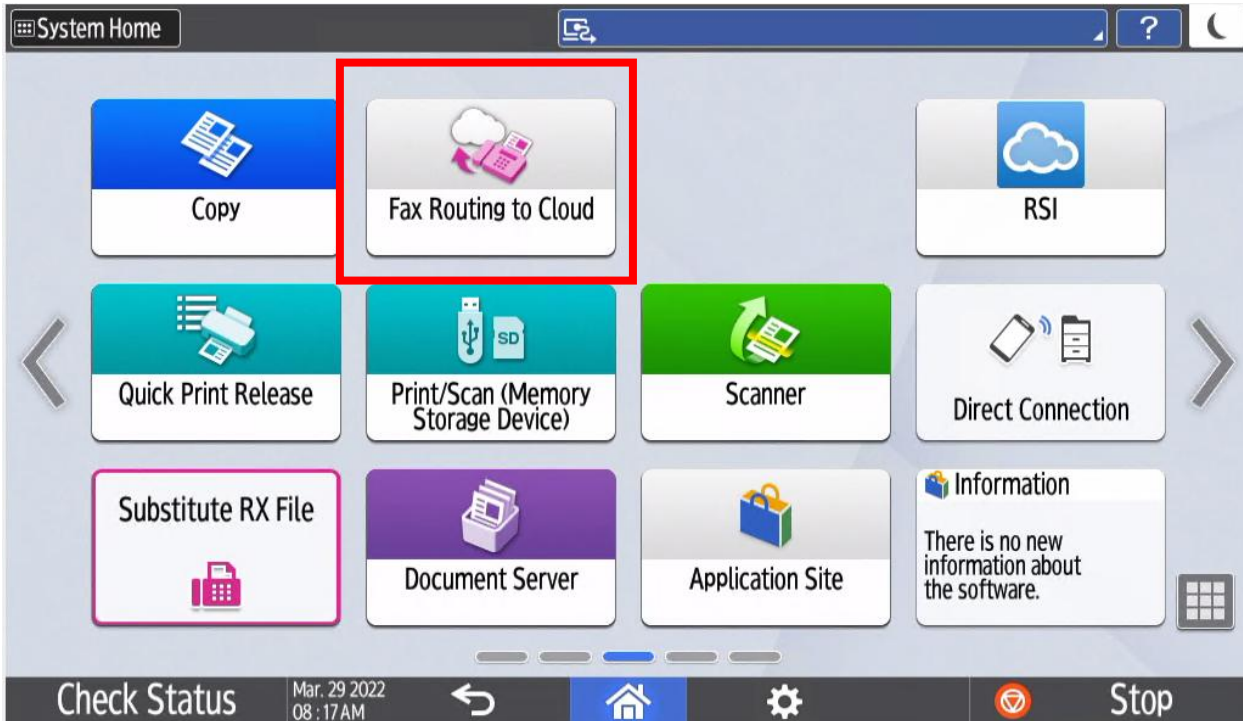
Mar. 29 2022
08:15 AM



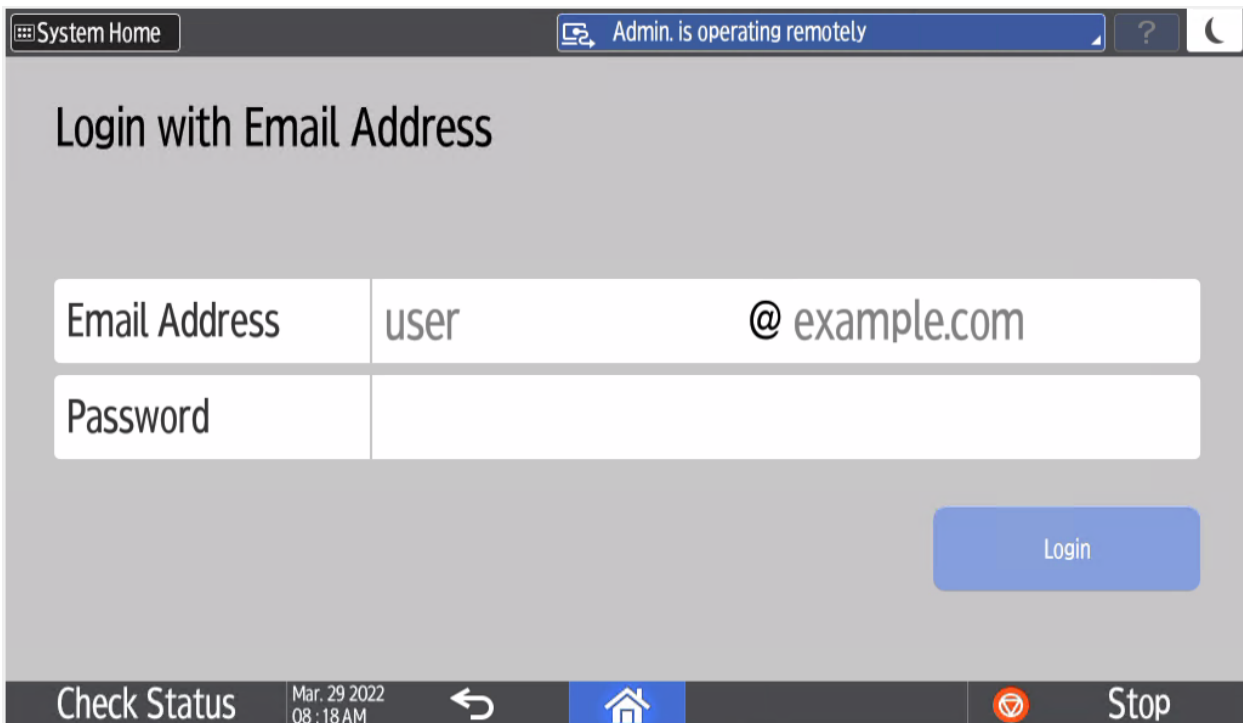
Stop

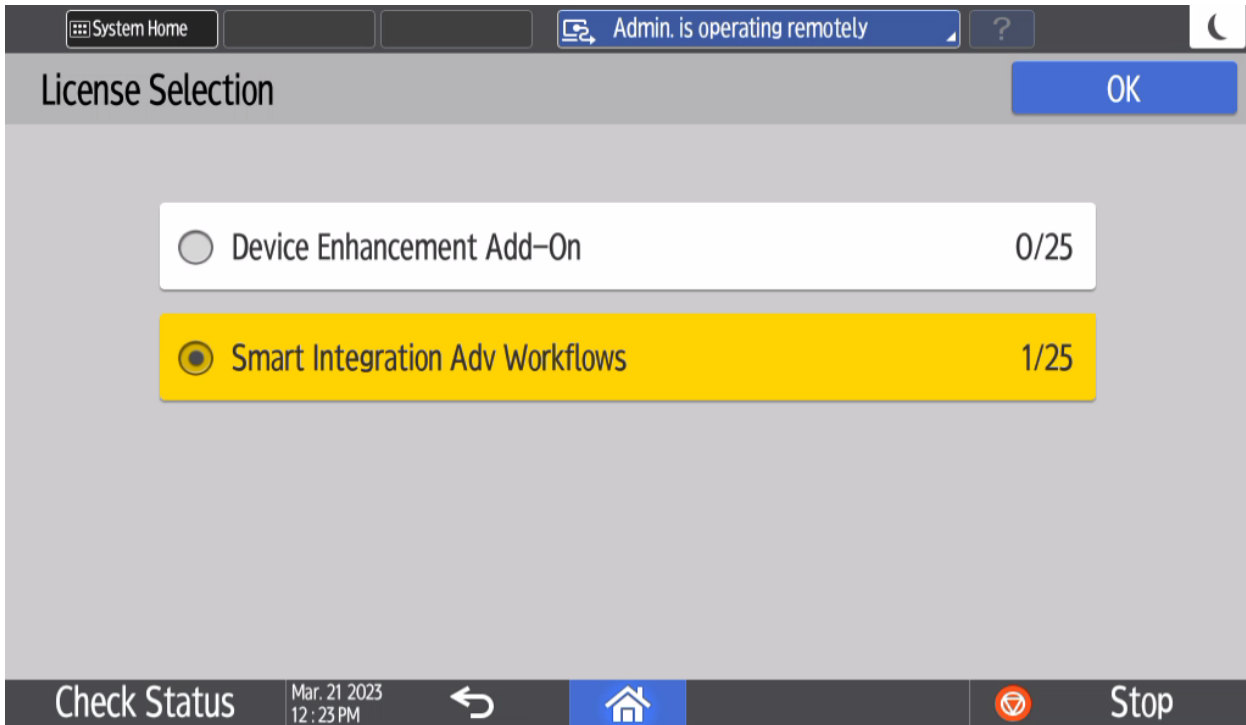
Fax Routing to Cloud Configuration

Step 1: Launch 'Fax Routing to Cloud' by touching on the ICON.

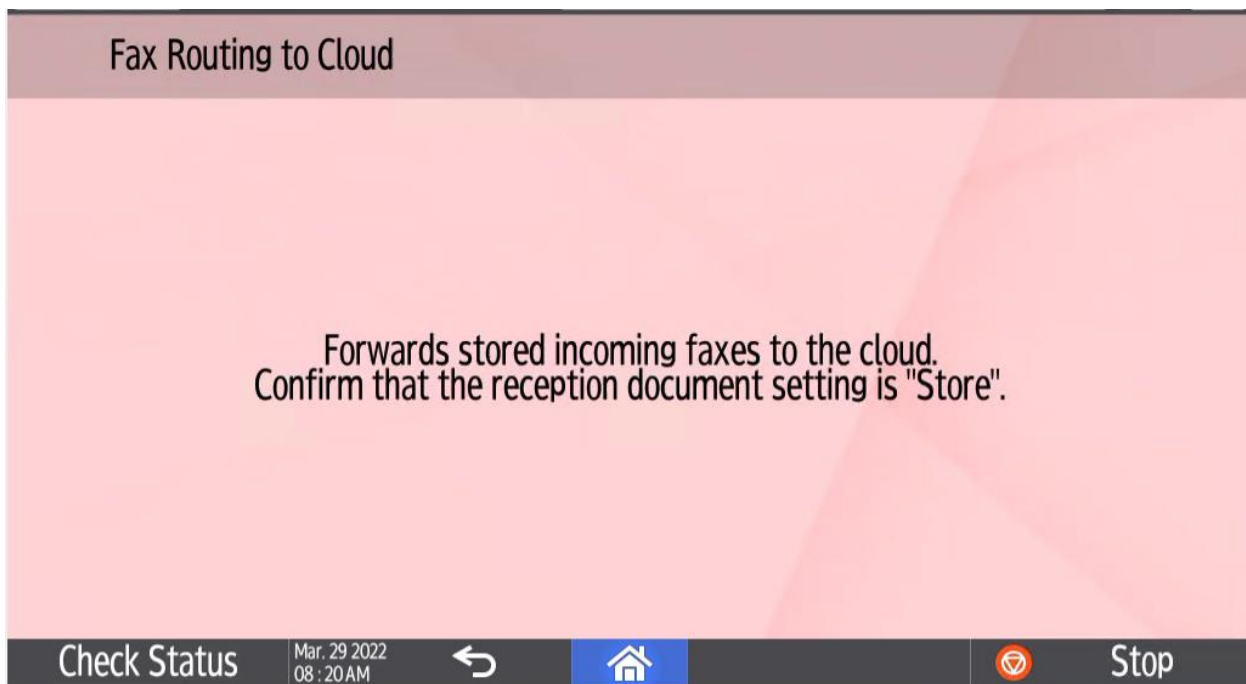


Step 2: Login using RSI Administrator Credential

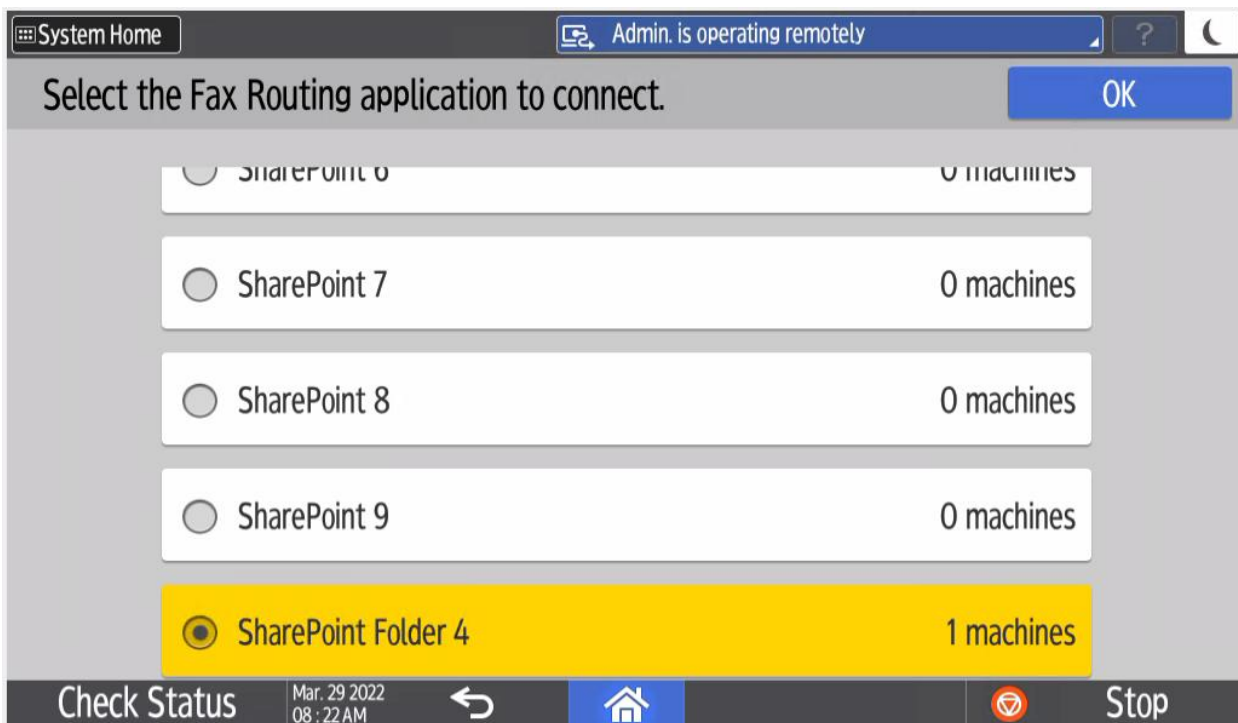
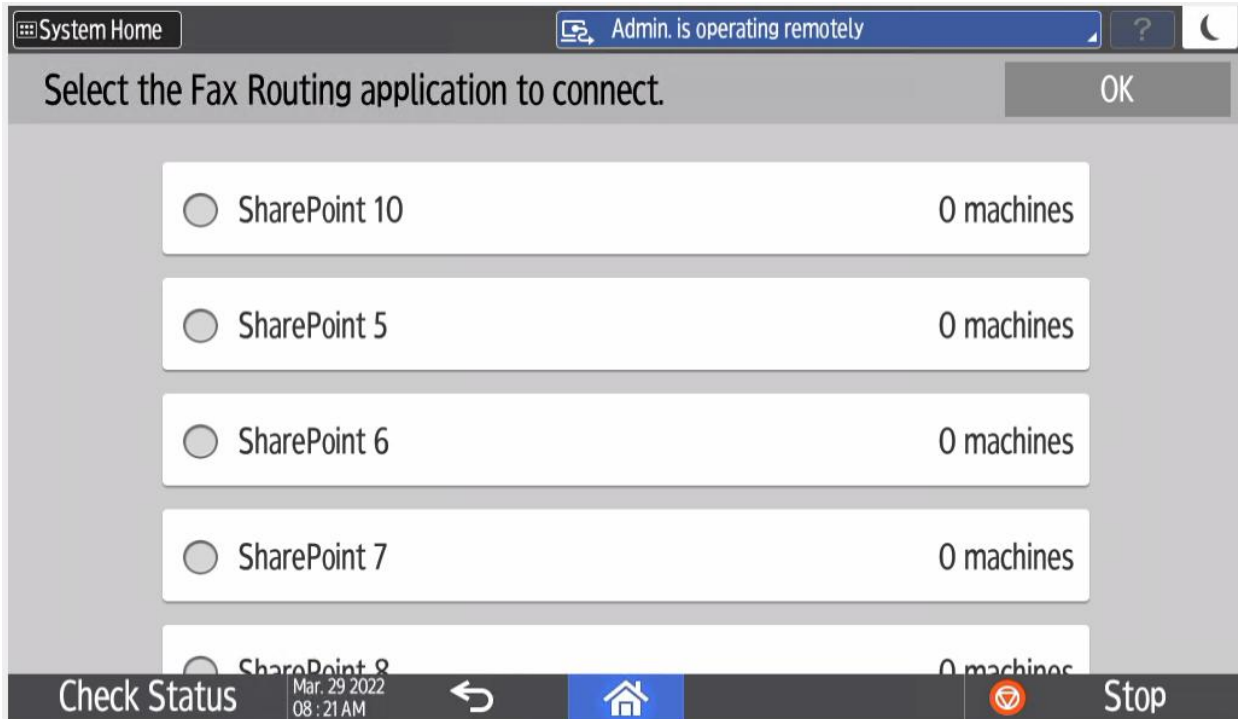


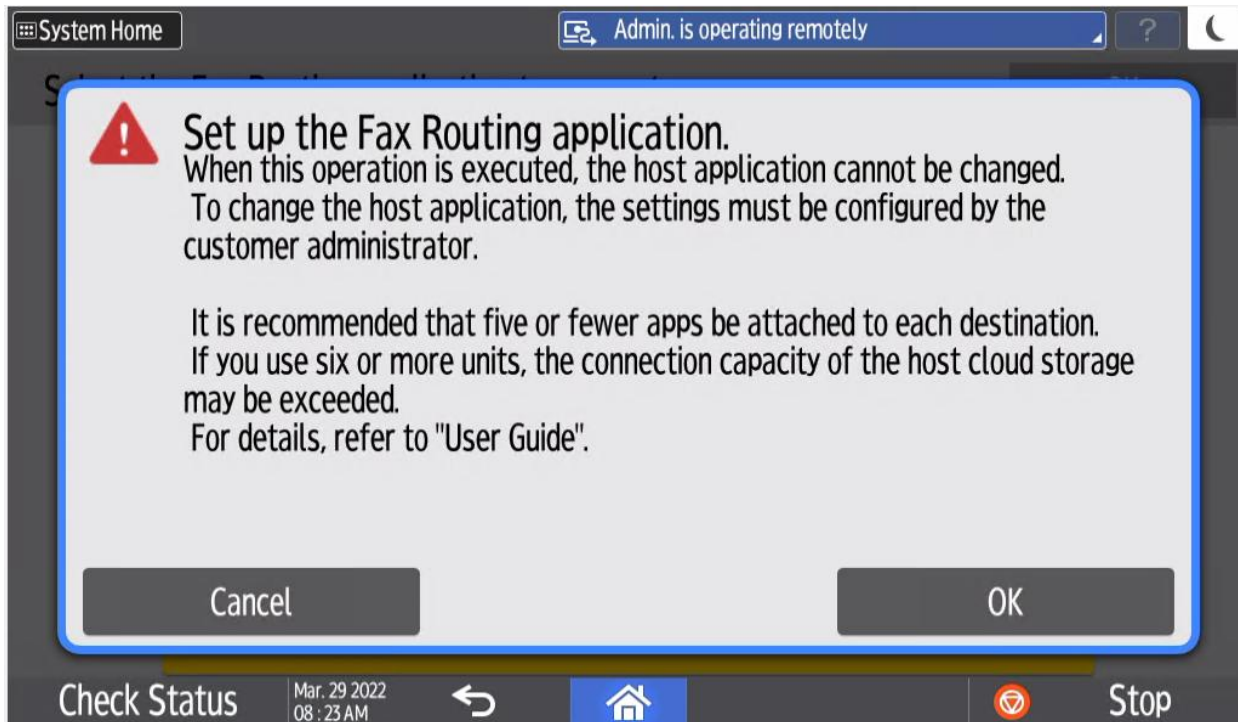
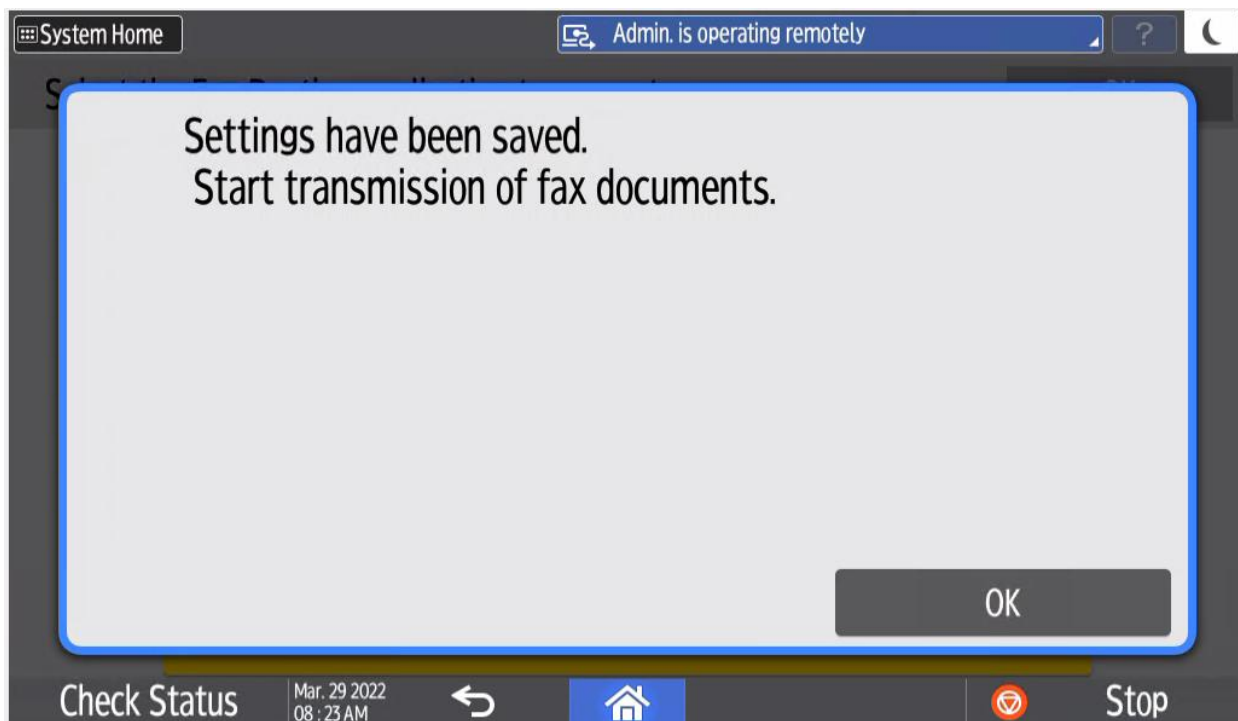


Step 3: If your Tenant has multiple package subscriptions, License Selection Screen will appear, Select the desired license.



Step 4: Select a workflow [This screen displays list of Fax Routing Workflows available in your RSI Tenant]



Step 5: Touch on 'OK' to complete the configuration**Step 6: Touch on OK on this Screen to complete.**

System Home Admin. is operating remotely ?

Fax Routing to Cloud

Admin Setting

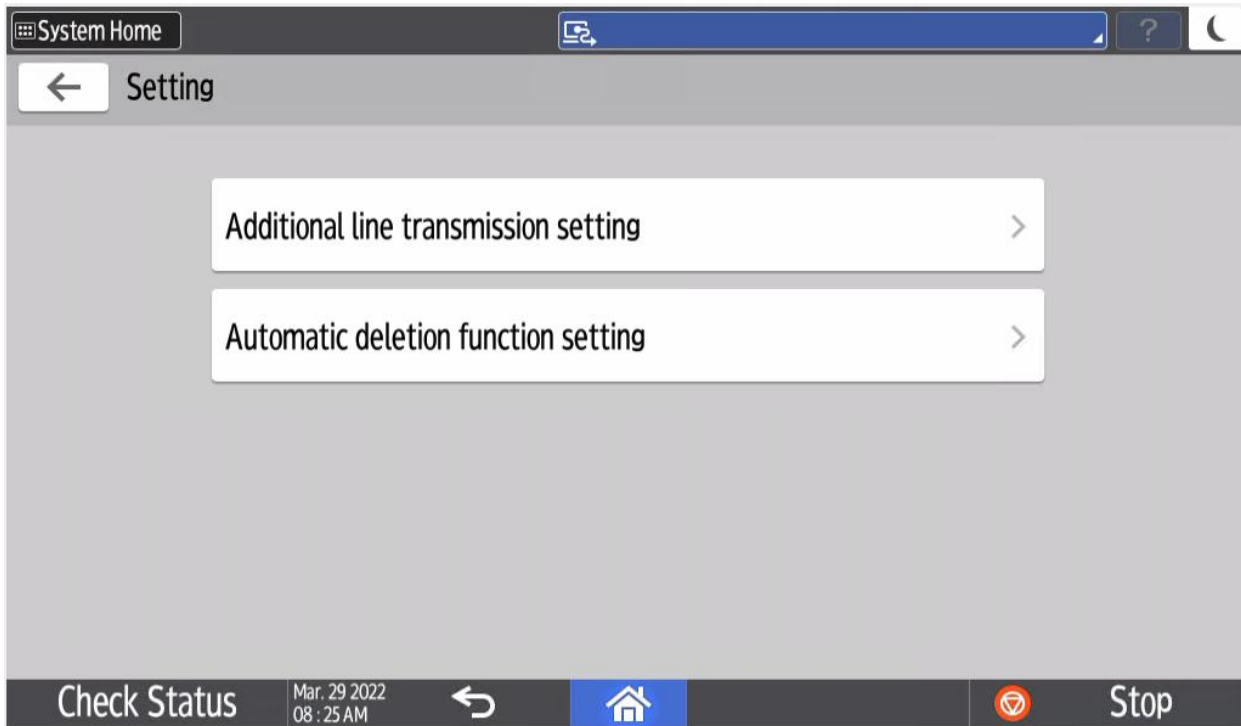
Access destination:SharePoint Folder 4

Forwards stored incoming faxes to the cloud.
Confirm that the reception document setting is "Store".

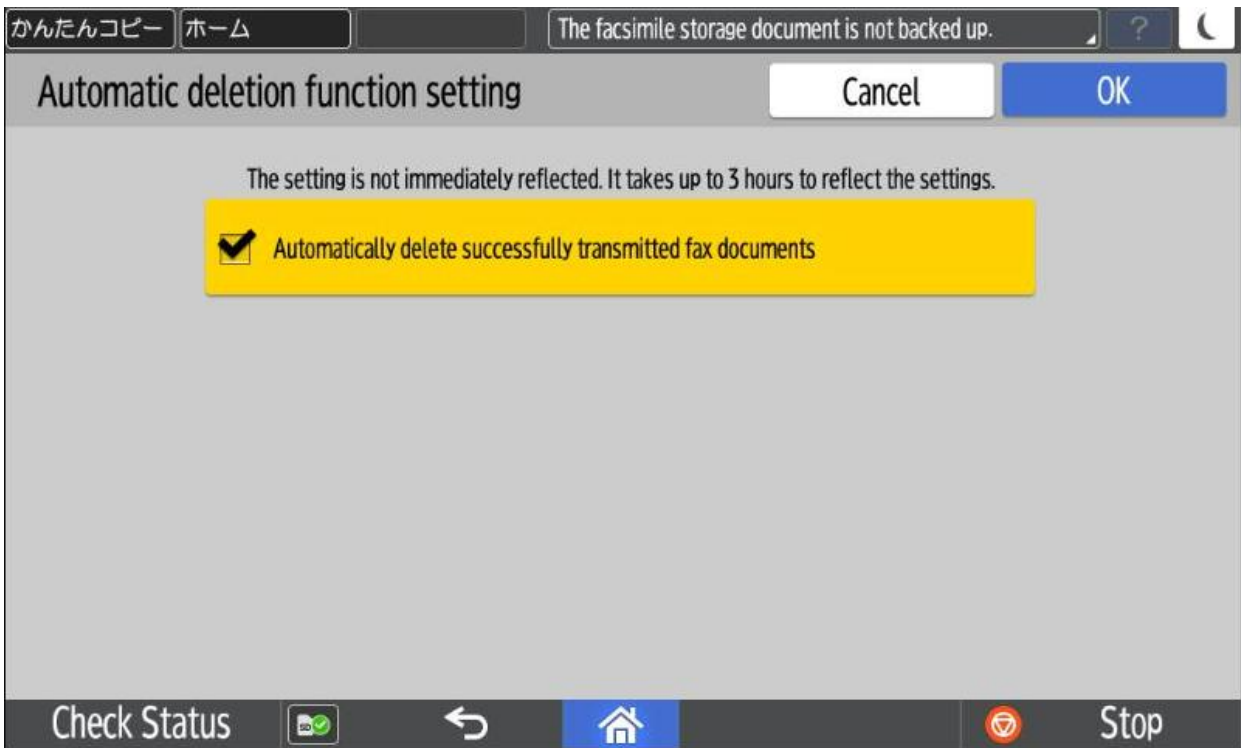
Check Status Mar. 29 2022 08 : 23 AM ↩ Home ⚠ Stop

Admin Settings in Fax App

Here are couple of settings available under 'Admin Setting'



Click on 'Automatic deletion function setting' to enable Automatic deletion.

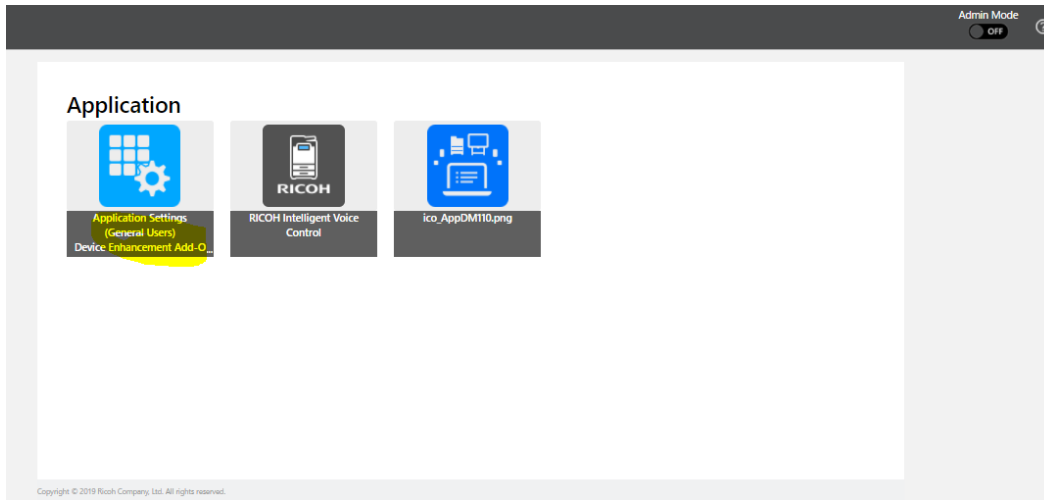


5 Configuring default Values

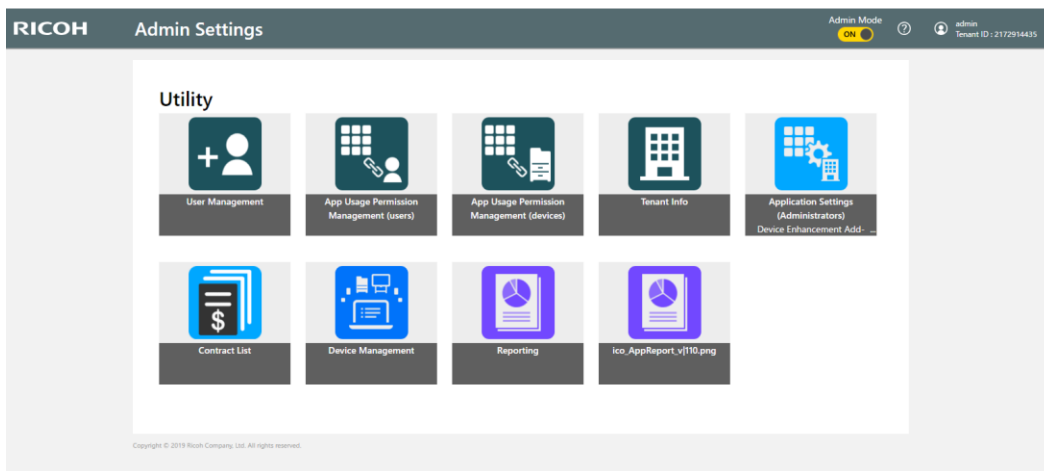
Smart Integration User Configuration Site URL

<https://na.accounts.ricoh.com/portal/login.html>

Login to above site using your credentials.



Switch to 'Admin Mode'



Click on 'Application settings'

Application Settings (Administrators)

←Top

Application Settings (Administrators)

Drag and drop an app to change its order within the same Home.
Click ⋮ to enable the change operation.

Application Management

- Screen Auto Reset
- Workflow Job Transaction (all within tenant)

Home

- SDCA Test Package
- Device Enhancement Add...
- Legal Add-On
- Healthcare Add-On
- Smart Integration Essenti...
- Smart Integration Connec...
- Local Folder
- Box
- DropBox
- Google Drive
- OneDriveBiz
- SharePoint
- Advanced Workflows

PrintCloud Plus

Scan to Me

Fax Routing

Add an Application

Copyright © 2019 Ricoh Company, Ltd. All rights reserved.

Fax Routing

Application Settings (Administrators) Admin Mode ON

←Application Management

Fax Routing Cancel Save

* Mandatory field

External Service Selection

External Service * Select Service Dropbox

Service Account * Select a User No user is selected.

Folder There is no folder selected.
[Open External Service Connections](#)

Default Parameter Settings

OCR * OFF

OCR Language * English

File Name

FileName Formula * MONTH(NOW()) & DAY(NOW()) & YEAR(NOW()) & '-' & HOUR(NOW()) & MINUTE(NOW()) & SECOND(NOW()) Check

Copyright © 2019 Ricoh Company, Ltd. All rights reserved.

Above settings are available to configure.

Application Settings (Administrators)

← Application Management

Fax Routing
* Mandatory field

Cancel Save

External Service Selection

External Service * Dropbox

Service Account * jayashrha Nuggehalli (admin) jay.nuggehalli@ricoh-usa.com

Folder /

[Open External Service Connections](#)

Default Parameter Settings

OCR * OFF

OCR Language * English

File Name

FileName Formula *

Copyright © 2019 Ricoh Company, Ltd. All rights reserved.

External Service	Dropbox Box Google Drive OneDrive for Business SharePoint
Service Account	Select Admin User Note: Admin should have done External Service connection with respective Cloud Service
Folder	Browse and Select Default Folder
OCR	OFF, PDF, PDF/A, WORD, EXCEL
OCR Language	English, French
File Name	Optional (this value is used as filename, when entered)
File Name Formula	If filename is left blank, filename is created using the formula programmed in User Site (Refer to section 'Configuring default Values') Default Formula: YEAR(NOW()) & "-" & MONTH(NOW()) & "-" & DAY(NOW()) & "-" & HOUR(NOW()) & MINUTE(NOW()) & SECOND(NOW()) Example: 2018-12-21-091654.pdf

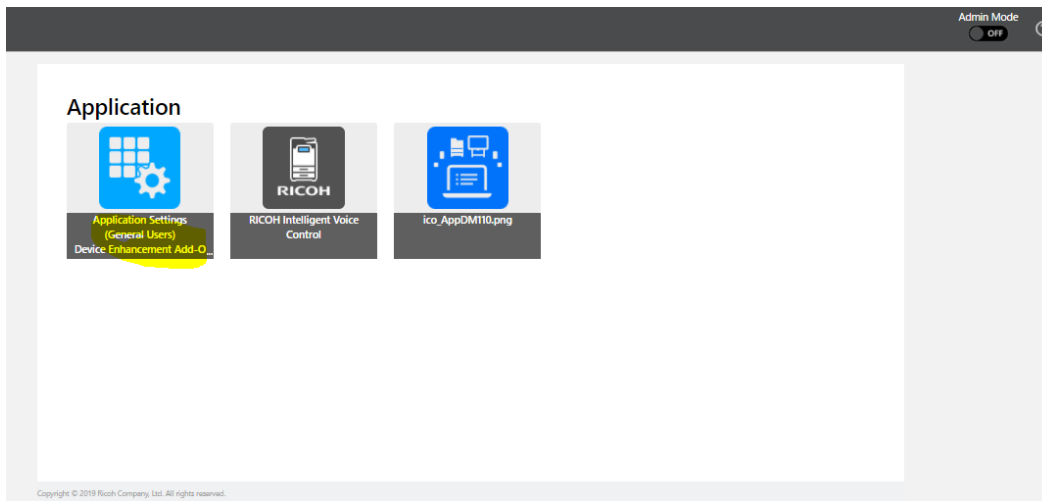
6 Use Case

One of the Use cases is to configure each MFP to route fax to a specific Folder. To Achieve this please follow these steps.

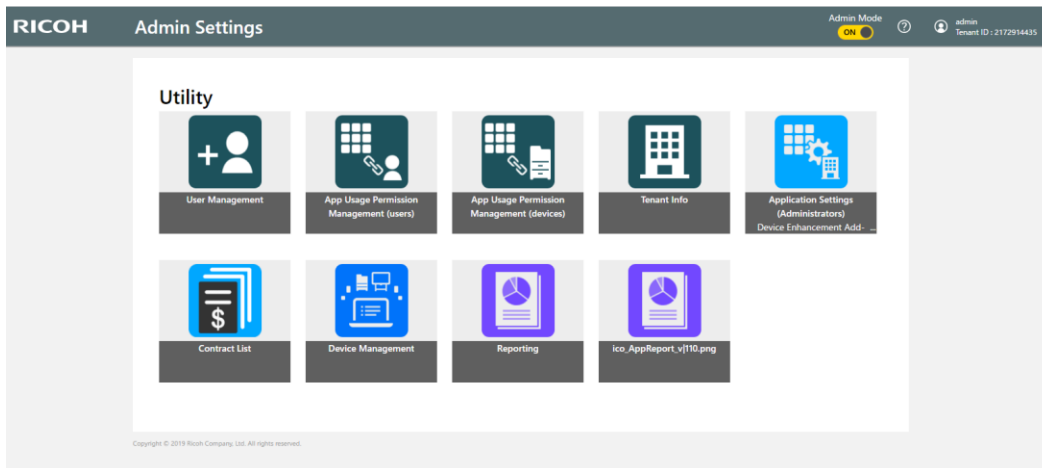
Step 1: Login RSI Workplace and Switch to Admin Mode.

<https://na.accounts.ricoh.com/portal/login.html>

Login to above site using your credentials.



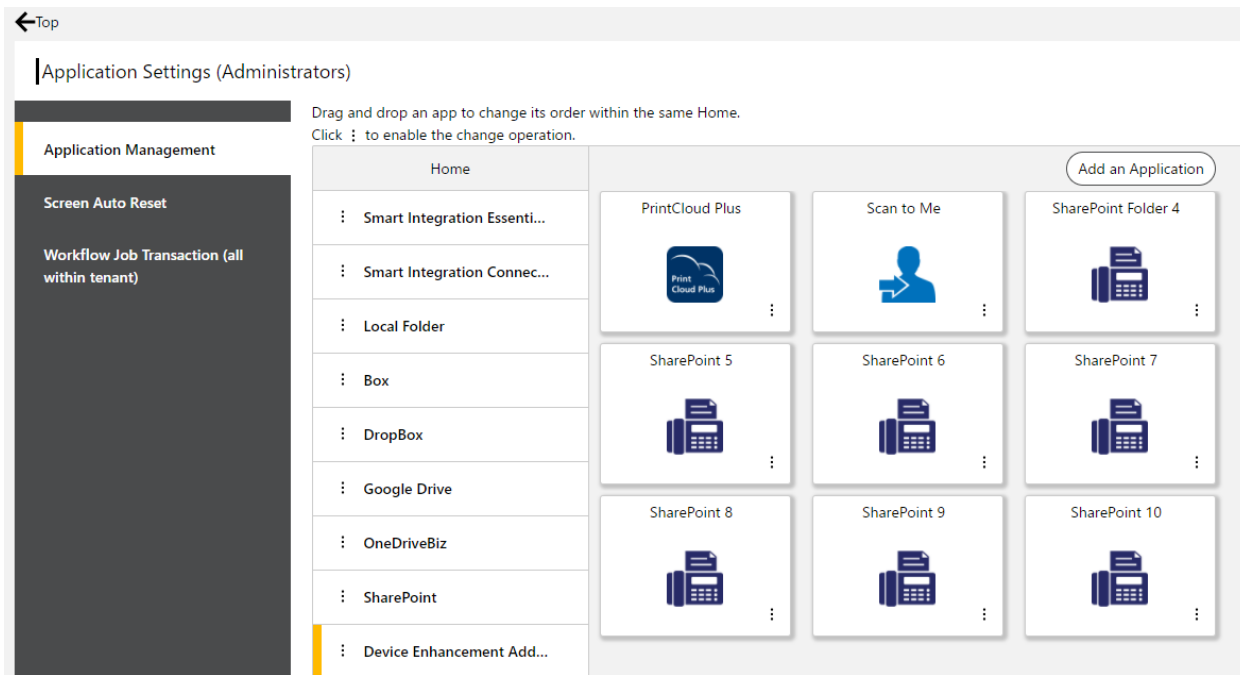
Switch to 'Admin Mode'



Click on 'Application settings'

Step 2: Make Copies of 'Fax Routing' Workflow

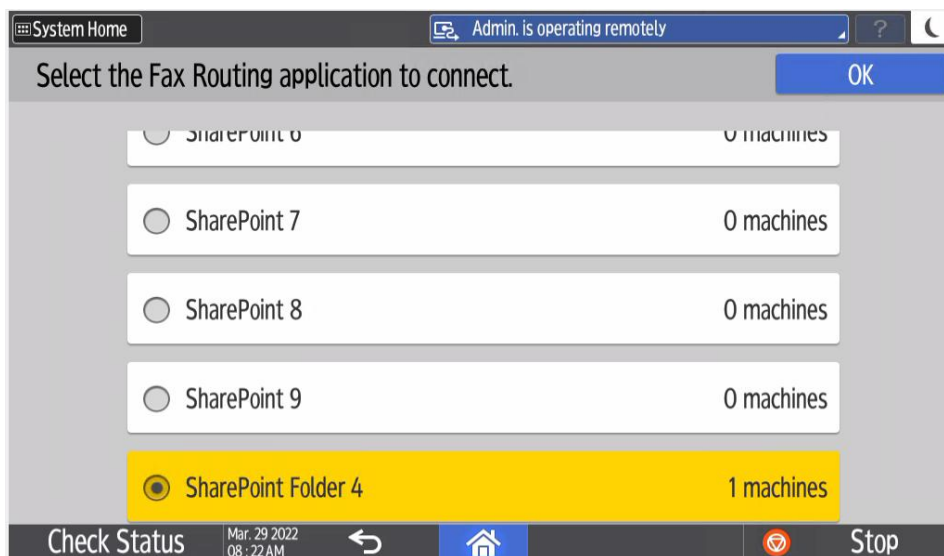
As shown below:



Step 3: Configure each workflow with Proper

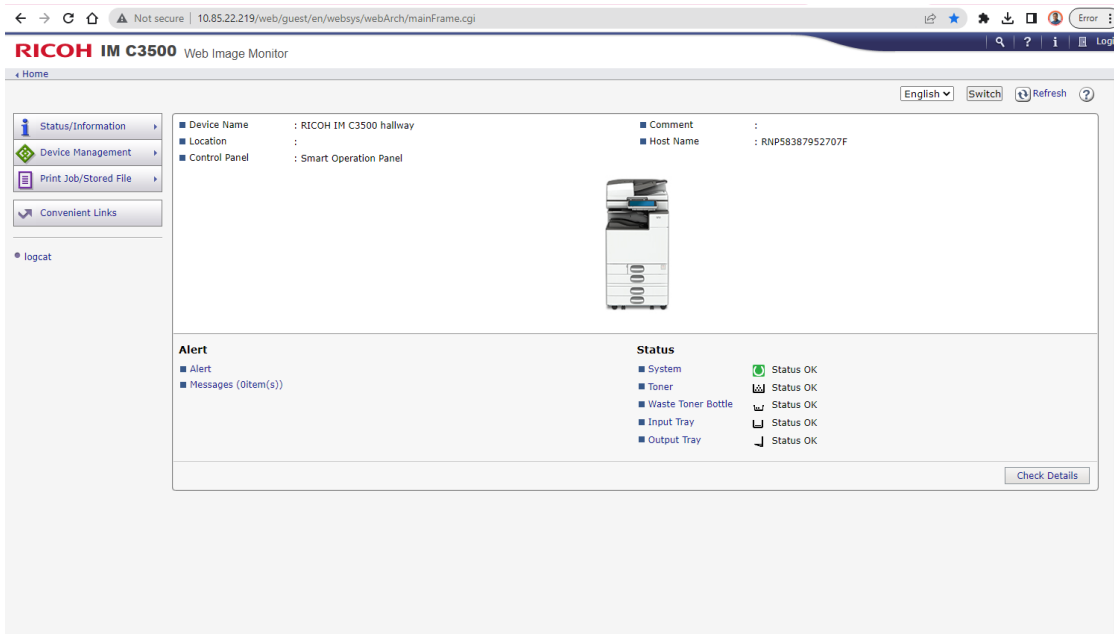
- A. External Service
- B. Admin User
- C. Default Folder [This can be unique for each Workflow]

Step 4: Install Fax Routing to Cloud App on each MFP and Configure each MFP with a unique Workflow. Depending on the Default Folder configured in the workflow, Fax gets routed to specific folder.

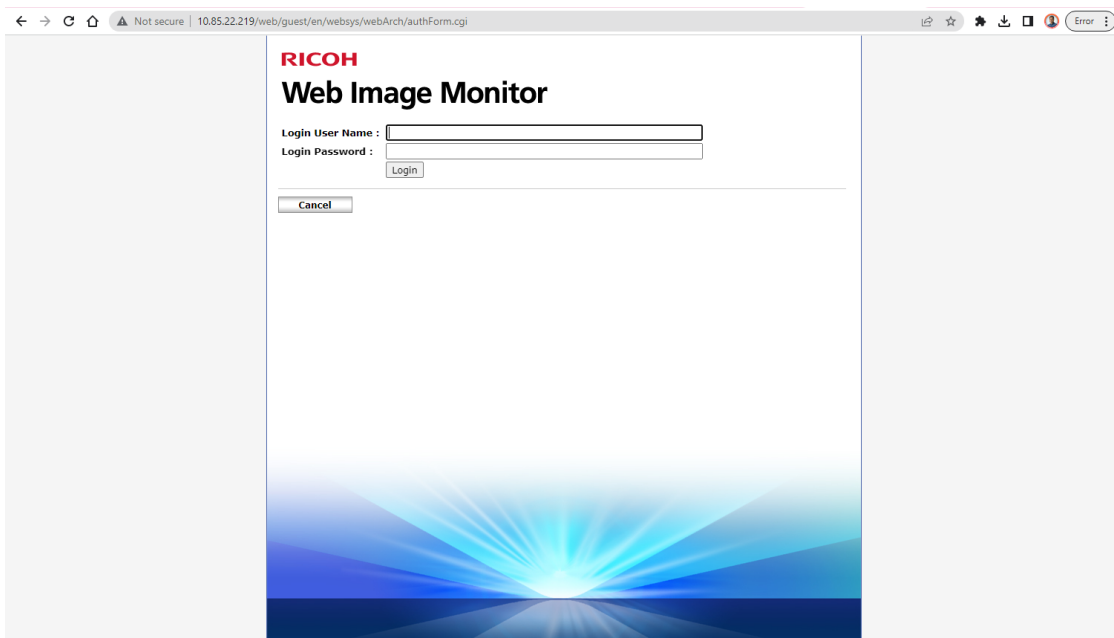


7 Fax Routing to Cloud Application Uninstallation

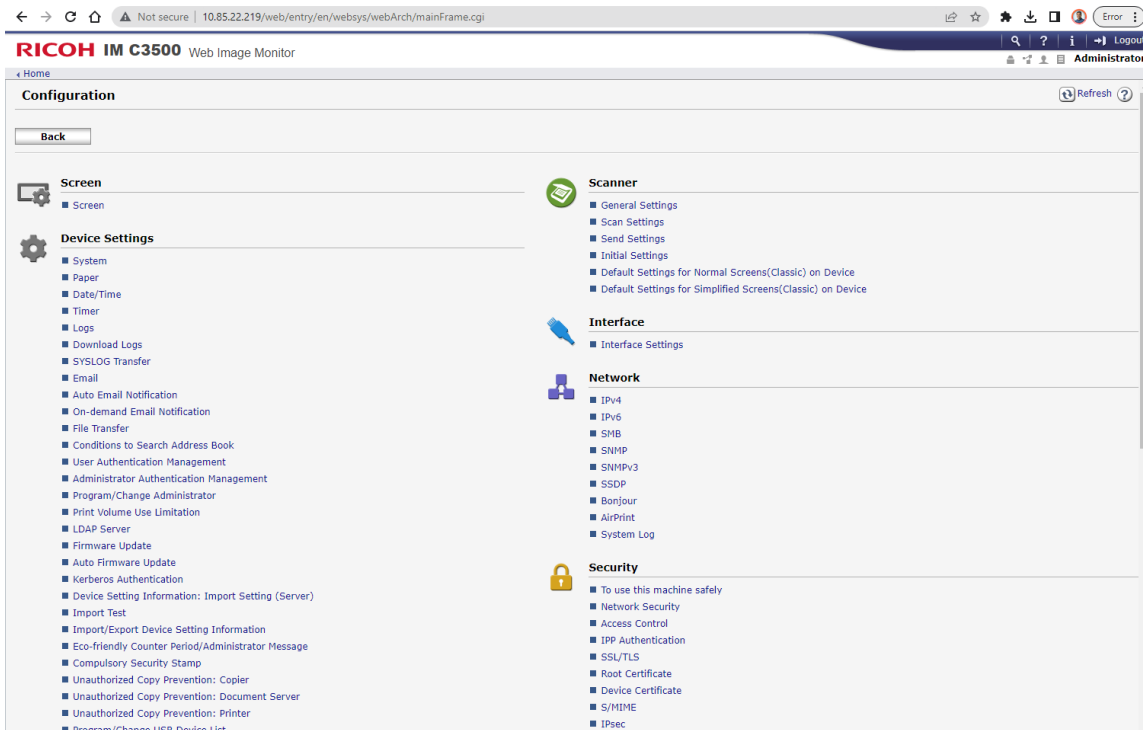
Open MFP Device Web Image Monitor, by browsing IP Address of MFP.



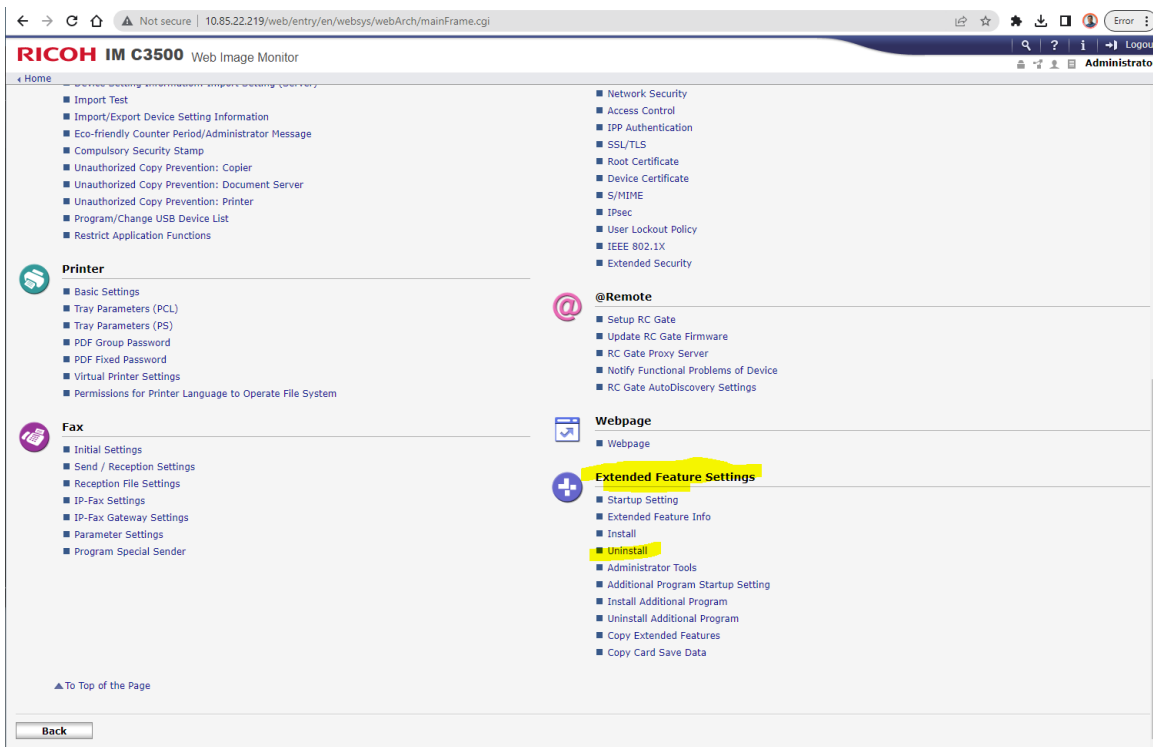
Login as administrator. Click on 'Login'



Select Device Management -> Configuration

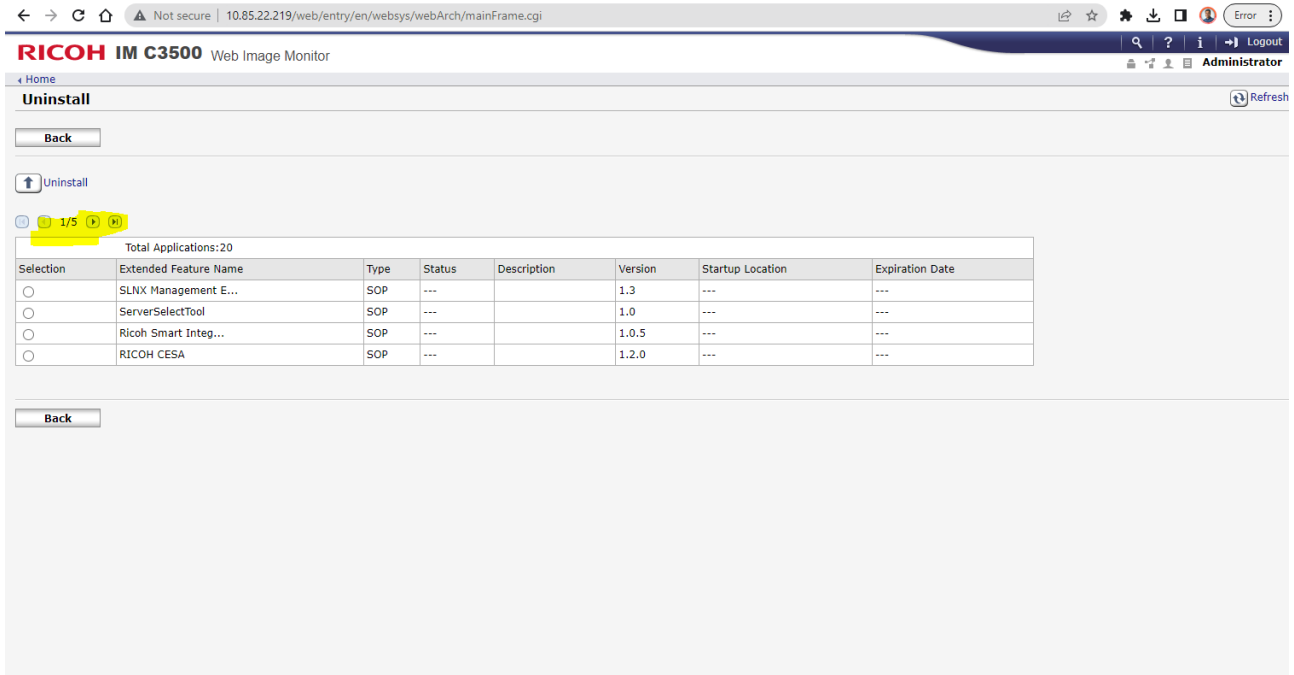


Scroll down to see 'Extended Feature Info'

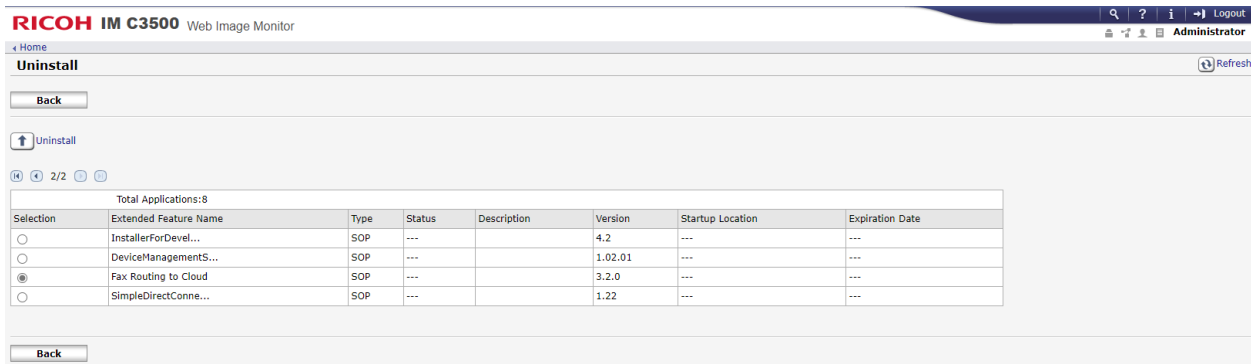


Click on 'Uninstall'

Use the pagination buttons to move to 'Fax Routing to Cloud' in the list.



Select 'Fax Routing to Cloud' and click on 'Uninstall'. This will uninstall the application. Power cycling MFP is recommended to complete uninstall.



8 Limitations

Limitations

- Fax Routing to Cloud App once configured for a specific Workflow, cannot be reconfigured for a different workflow. Requires uninstallation and reinstallation to reconfigure the workflow.
- It is recommended to connect five or fewer MFPs to connect to same Fax Routing workflow.